

MINUTES FOR JUNE 4, 2012
COLUMBUS, KANSAS, CHEROKEE COUNTY
OFFICE OF THE COUNTY CLERK
CRYSTAL L. GATEWOOD

The Cherokee County Commissioners met June 4, 2012. Those in attendance were Commissioners Collins and Hilderbrand. The Pledge of Allegiance was said by all. Commissioner Collins made a motion to accept the minutes as presented by County Clerk Crystal Gatewood; his motion was seconded by Commissioner Hilderbrand with Commissioners Collins and Hilderbrand voting in favor. Commissioner Collins and Hilderbrand and Clerk Gatewood signed off on the documentation.

OTHER BUSINESS

Ron Holmes came before the commission to discuss the Columbus Museum expansion. He has been working on the project for three years. He is asking the county to provide and haul eighty cubic yards of rock to help save \$4,000 to \$5,000 and the hauling of dirt away. Commissioner Hilderbrand and Collins agreed.

Brennan Hurt came before the commission to tell them about a new program available from AFLAC. They now have group policies as well as individual policies available. Previous health issues will not keep an individual out of the program. Mr. Hurt's office is located in Pittsburg, Kansas and he is the point of contact for the program. The commission will allow him to schedule open enrollment so those employees interested may come in and listen and determine if the employee chooses to sign up for the program. Mr. Hurt and the HR Clerk will schedule a time in August and make sure everyone employed by the county gets the waiver as well as the information. The commission thanked him for coming in.

COUNTY APPOINTED DEPARTMENT HEADS

Betha Elliott of the Cherokee County Health Department reported that her department is preparing for summer shots and getting area children ready for school. She also reported that an e-waste recycle center was held at the fairgrounds in Columbus on Saturday, June 2, 2012 and it will be a week before they know how many pounds were collected.

Wayne Elliott of 911 mapping reported the county had registered 101 storm shelters in the county and the most were located in Columbus, but there were a few registered in Galena and Baxter Springs. He showed the commission a map which shows the locations of the registered shelters in the county.

Supervisor Gene Langerot of the County Lot reported they had looked over the bids that were submitted from the 21st of May for asphalt, oil and grease, tires, and fuel and the commission agreed to wait until Commissioner Garner was present to sign off on the bids. Gene also informed the commission that they were reprogramming the radios to change from wide ban to narrow ban frequencies so they can have more frequency bans on the communication radios that the lot uses.

County Appraiser Nancy Herrenbruck reported that her office had finished eighty-nine hearings with citizens on appraisals. Her office reported that valuations are flat and they were starting on end of the year processing. Nancy also noted that storm shelters are not valued.

Deana Randall of Human Resource reported mid month cut off was June 6, 2012 at 12:00 noon and June month end cut off was June 20, 2012 at noon.

Ralph Houser Court House Maintenance- reported everything was going well.

Jason Allison of Emergency Preparedness reported that the storm siren grant is complete and all funding from the state of Kansas has been received. He reported three individuals are getting certified by the CERT Team and he is also working on his 2013 budget proposal.

ELECTED OFFICIALS

Cherokee County Treasurer Juanita Hodgson reported her office had met its first deadline on the new MOVRS system and it is slowly getting better. She noted that during the transfer by the state from the old to the new system some of the records did not transfer in the conversion, several thousand state wide. The state was late sending out June 2012 tag renewal notices. Her office is caught up on second half taxes that were mailed in and they will be sending out reminders of taxes due to the county. Driver's License is up and open to the public.

Cherokee County Register of Deeds Barbara Bilke reported that the sale of passports is slow and she gave a five month comparison report to the commission. Her staff of three is working out well.

Cherokee County Sheriff David Groves reported the Farm Show and the County Fair will be the same week in Cherokee County this year and his office will have security scheduled. Galena Days went well and he has work crews helping with the clean up.

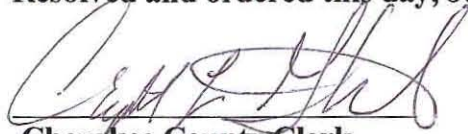
Cherokee County Clerk Crystal Gatewood asked that the department heads turn in their 2013 budget proposals by July 16, 2012 by 5:00 PM that day so she can begin inputting the numbers in the counties 2013 budget for the commission to review. She asked for the MSA (Major Service Area) total numbers: Salaries total, Commodities total, Contractual total, and Overall total only (Bottom Line), and once the budget is approved then her office will need an itemized budget turned in so she can do the bookkeeping for the overall county budget. She also noted the final itemized budgets are only guidelines to help them budget through the year and they can be changed as needed when expenses arise. The commission and Clerk Gatewood agreed to help the department heads with their budget anytime. Some of the office heads asked if they could have help with their budget prep and would like a session after a Monday commission meeting to get help. Gene Mense will be here July 2, 2012 to audit the county for 2011 and the commission wants him to come in and give an overview on 2012 funds and to find out the sustainability of the current budgets for 2012.

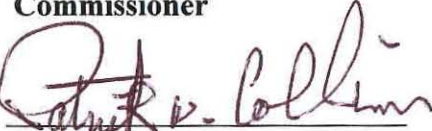
The commission thanked all the Department Heads for coming in and giving them an update from their offices. It was also decided by the commission and the Department Heads that the June 11, 2012 regular Commission Meeting will resume at 1:30 PM at the County Jail in the conference room for a discussion on the proposed personnel handbook.

ADJOURNMENT

Commissioner Hilderbrand made a motion to adjourn at 11:40 AM; his motion was seconded by Commissioner Collins with Commissioners Collins and Hilderbrand voting in favor. The next Cherokee County Commission meeting will be held June 11, 2012 at 9:00 AM in the Cherokee County Courthouse in Columbus, Kansas.

Resolved and ordered this day, June 11, 2012


Cherokee County Clerk

Commissioner

Commissioner


Commissioner

Museum Building
100 S. Tennessee
Columbus, KS 66725

The Museum Building houses

The Columbus Museum

and

The Clione Bieber Memorial Library for Family Research
which is operated by the Cherokee County Kansas Genealogical-Historical Society

The present Museum Building measures 100 ft. x 90 ft. with a 20 ft. x 30 ft. extension in the front. The building contains 9,700 square feet. Of that amount, 5,492 square feet is used for museum display area. The Genealogy Library and records storage area contains 700 square feet. The museum storage area has 510 square feet. The rest of the footage is used for restrooms, office and meeting room.

The proposed addition will extend from the south end of the building and will measure 80 foot long x 28 foot wide. It will contain 2, 240 square feet which will be used for additional display area, art gallery, and sitting or meeting rooms.

Number of Visitors/Researchers to the Museum Building

COLUMBUS MUSEUM

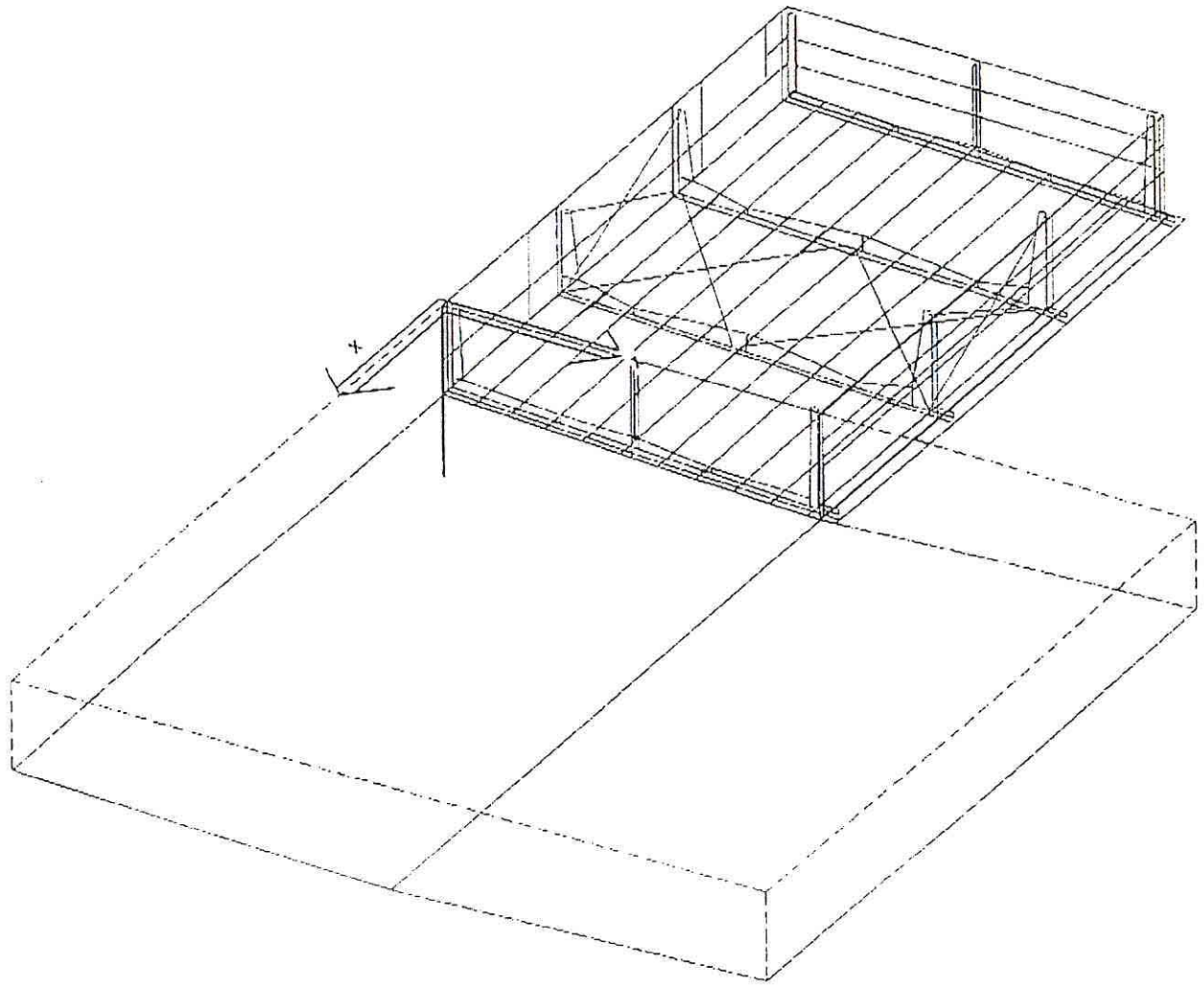
2007	875 visitors including 2 persons outside of the United States
2008	510 visitors
2009	491 visitors including 2 persons outside of the United States
2010	567 visitors including 3 persons outside of the United States
2011 to Aug. 1	281 visitors

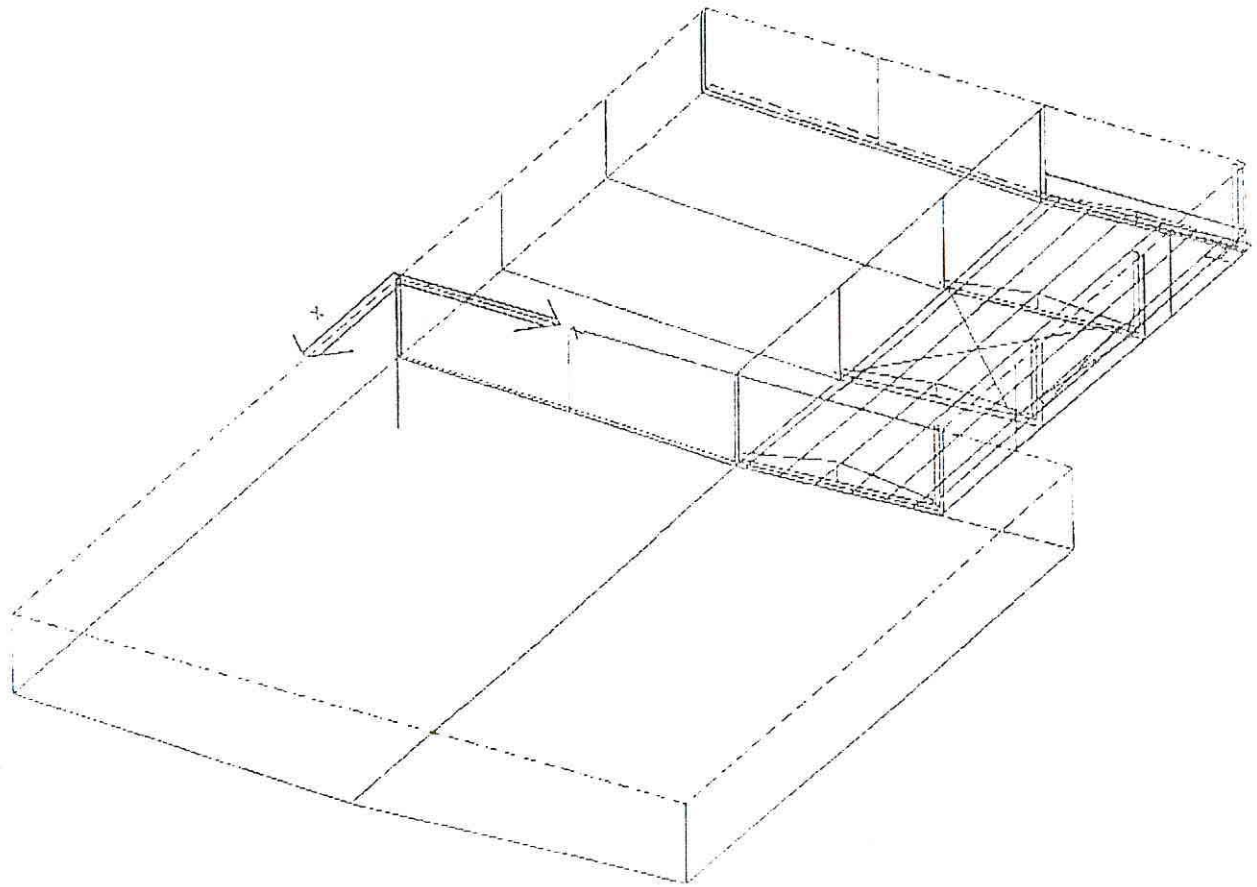
GENEALOGY LIBRARY

2007	892 researchers representing 28 states
2008	810 researchers representing 26 states
2009	760 researchers representing 27 states
2010	797 researchers representing 28 states and a man from New Zealand
2011 to Aug. 1	327 researchers representing 16 states

TOTAL VISITORS/RESEARCHERS

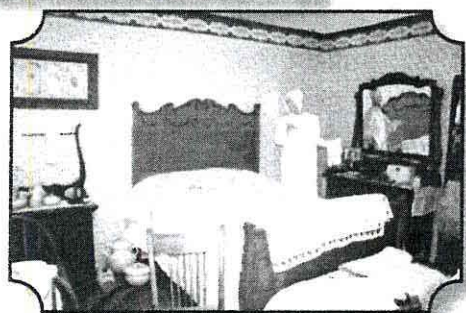
2007	1767
2008	1320
2009	1251
2010	1364
2011 to Aug. 1	608





Featured Exhibits

One of our features is a replica of a five room home furnished in the style of the late 19th to 20th Century. Other exhibits include: a doll collection, country store and school room.



History of the Museum

The Columbus Community is indebted to the members of the Clio, Home Culture and Shakespeare Clubs for establishing a museum in the basement of the Columbus Public Library in 1964.

Outgrowing that space, it moved to a house on the American Legion Fairgrounds in 1971.

The Columbus Museum, Inc. started saving for a building fund. The Columbus Quincentennial Commission raised \$220,000 in public donations for a new building.

Constructed in 1992 and completed in time for the dedication on the 500th anniversary of Christopher Columbus' discovery of America, the building houses both the Museum and the Cherokee County Kansas Genealogical-Historical Society, Inc.

The growth and upkeep of this museum depend on donations and memberships.

Hours: 1:00 to 5:00

Tuesday thru Saturday

Group tours available by appointment

Columbus Museum, Inc.

100 South Tennessee

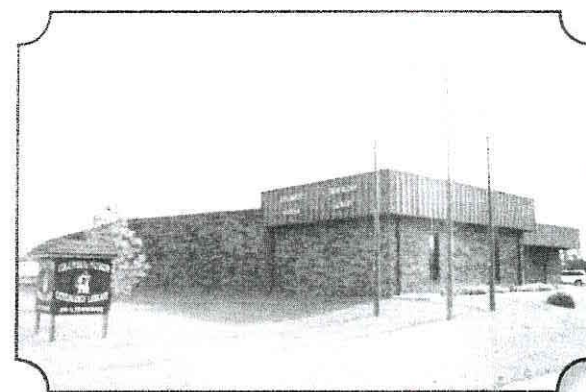
P.O. Box 211

Columbus, Kansas 66725

(620) 429-2160

Columbus Museum

100 South Tennessee
Columbus, Kansas 66725



Columbus City Museum
founded in 1964 and dedicated
to the historical preservation
of Columbus and the
surrounding area.

ADMISSION: FREE
Donations Welcomed

Memorial Chapel



The Memorial Chapel holds names of those honored on brass plaques. A \$50.00 donation in remembrance of a loved one places a plaque with his or her name on the chapel wall. The stained glass window was designed and made by local artist John Smittle. A fully restored antique pump organ is also displayed.

Memorial to Veterans



The museum displays a collection of military uniforms from all branches of service and pictures of veterans who served our country from the Civil War to the present. Collected in alphabetized notebooks are photographs and information on Cherokee County veterans.

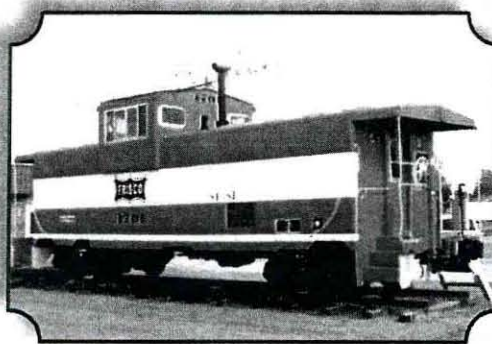
Famous Locals



Merle Evans

Biographical information on other nationally known persons from the Columbus area include: Page Cavanaugh, vocalist-pianist; and Edith Bell, movie star, model and sculptor.

The Frisco Caboose

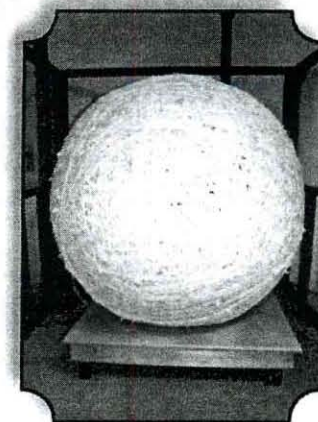


One of the first to be converted from a railroad car, it was acquired by railroad employee J.W. Robinson who donated it to the Columbus Lion's Club and they donated it to the museum. Due to lack of handicap access the interior is not on display. A railroad wye - a track arrangement with three switches and three legs for reversing the direction of the train - is also on display with the caboose. The Columbus wye is one of three in the United States.

Ball of String

The ball of string weighs approximately 900 pounds and would extend 180 miles in length. Service Station owner, Eddie Fouts, collected the string from bread wrappers.

It is said that Eddie would add a section of string for each drafted or enlisted person during World War II.



Livery Stable

This features the original model of the horse from A. Hood and Son Hardware Store. The display features 1880's



farm implements and mining tools, oxen and mule yokes, Conestoga wagon staves, a pioneer reclining chair and a window from the original Benham Livery Stable.